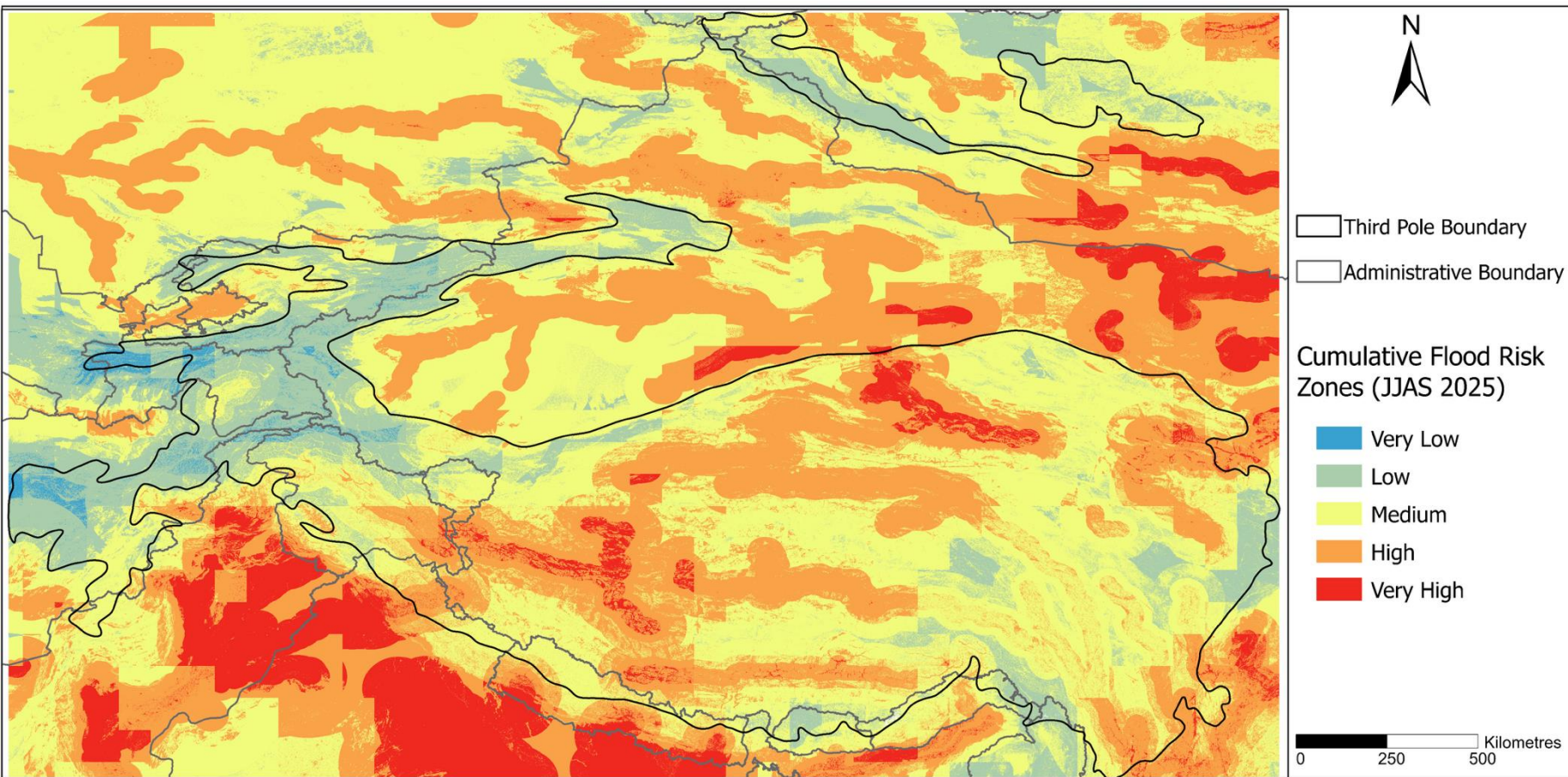


# Model Validation for JJAS 2025 season

---





## What the Map Shows

- The map integrates **terrain, hydrology, land use, and JJAS 2025 rainfall forecasts** using a weighted-sum model.
- Red zones** highlight areas where multiple flood-risk drivers converge, indicating **heightened vulnerability**.

## Where Flood Risk is Highest

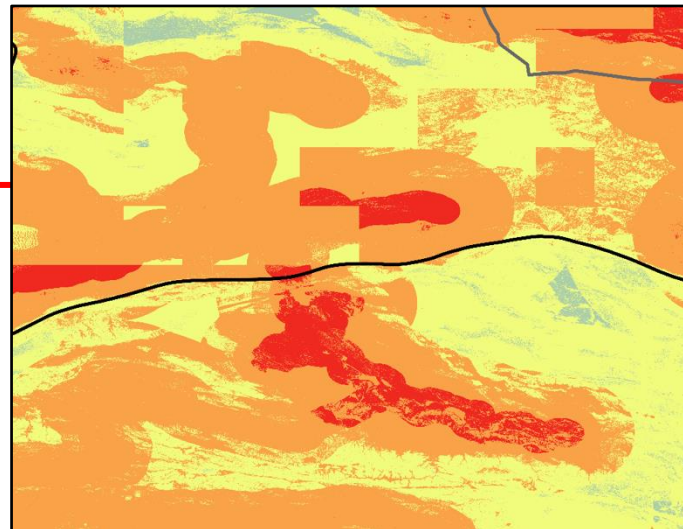
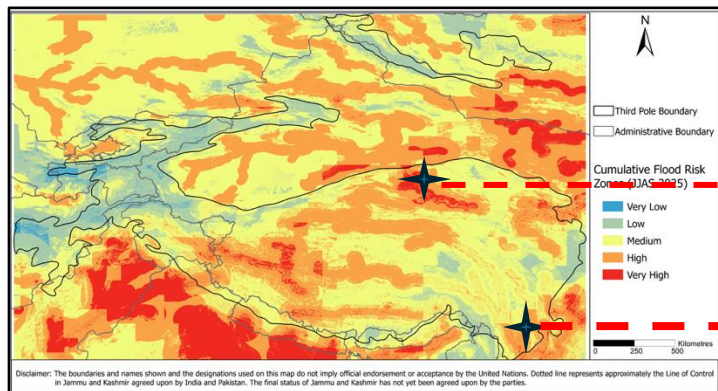
- High risk:** China (*Sichuan, Yunnan*); Bhutan (*almost entire country*); Pakistan (*Sind*); India (*North & North-East*); Bangladesh; Myanmar.
- Very high risk:** Southern China; Bhutan (*Gasa, Thimphu, Wangdue Phodrang*); widespread across Nepal; parts of Pakistan, Bangladesh, Myanmar, and India's northern/eastern belts.
- These areas align with steep terrain, dense river networks, and strong monsoon rainfall anomalies.

## Where Flood Risk is Lowest

- Western and high-elevation regions show lower composite risk.
- Includes Kyrgyzstan (*Jalal-Abad, Bishkek*), Tajikistan (*most areas*), Afghanistan, and Uzbekistan.
- These zones are typically drier, less influenced by the monsoon, and have lower terrain-driven flood susceptibility.

Disclaimer: The boundaries and names shown and the designations used on this map do not imply official endorsement or acceptance by the United Nations. Dotted line represents approximately the Line of Control in Jammu and Kashmir agreed upon by India and Pakistan. The final status of Jammu and Kashmir has not yet been agreed upon by the parties.

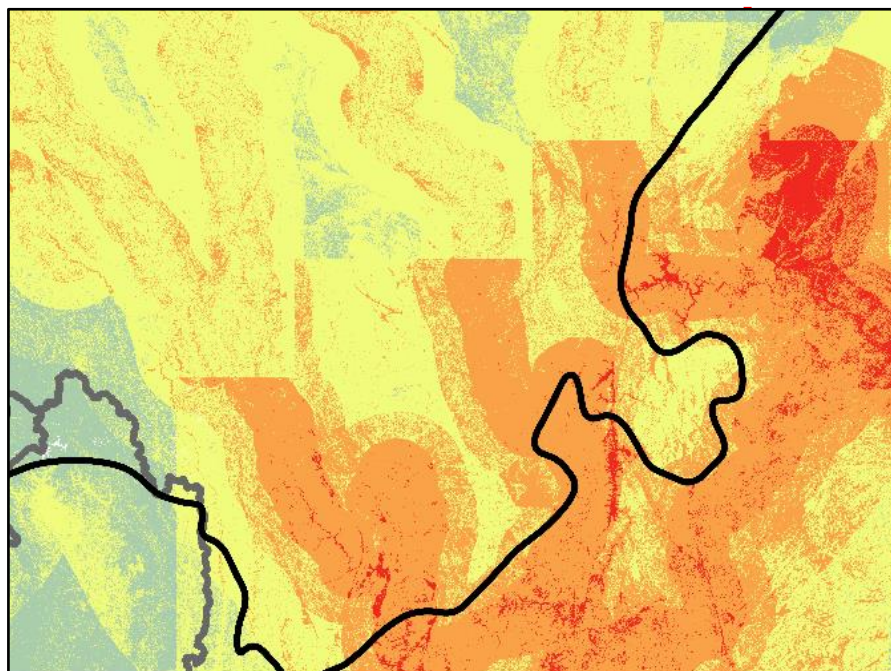




News

### At least 10 dead, 33 missing in flash floods in China's Gansu province

President Xi Jinping orders 'all-out' rescue operations to save the missing people, CCTV says.

China

### China - Floods (NOAA-CPC, media) (ECHO Daily Flash of 14 July 2025)

News and Press Release • Source: [ECHO](#) • Posted: 14 Jul 2025 • Originally published: 14 Jul 2025 • Origin: [View original](#)

- Heavy rainfall and consequent flooding has been affecting southwestern China as well as northern regions, including Beijing on 10 July, resulting in evacuations.
- According to media, 10,000 people were evacuated from cities in the provinces of Sichuan and Yunnan, as 25 rivers exceeded alarming thresholds.
- Over the next 48 hours, more moderate rain with isolated heavy rain is expected in the southwest, southeast and northeast of China.

Primary country: [China](#)

Source: [European Commission's Directorate-General for European Civil Protection and Humanitarian Aid Operations](#)



By Farid Ahmad Atiqi,  
29 JUNE 2025

AFGHANISTAN

# 4 Killed, 100s Displaced by Floods in Maidan Wardak, Logar

0 COMMENTS



FACEBOOK



TWITTER



EMAIL



COMMENT



MORE SOCIALS

Officials say that as a result of the floods, hundreds of families have also been displaced.

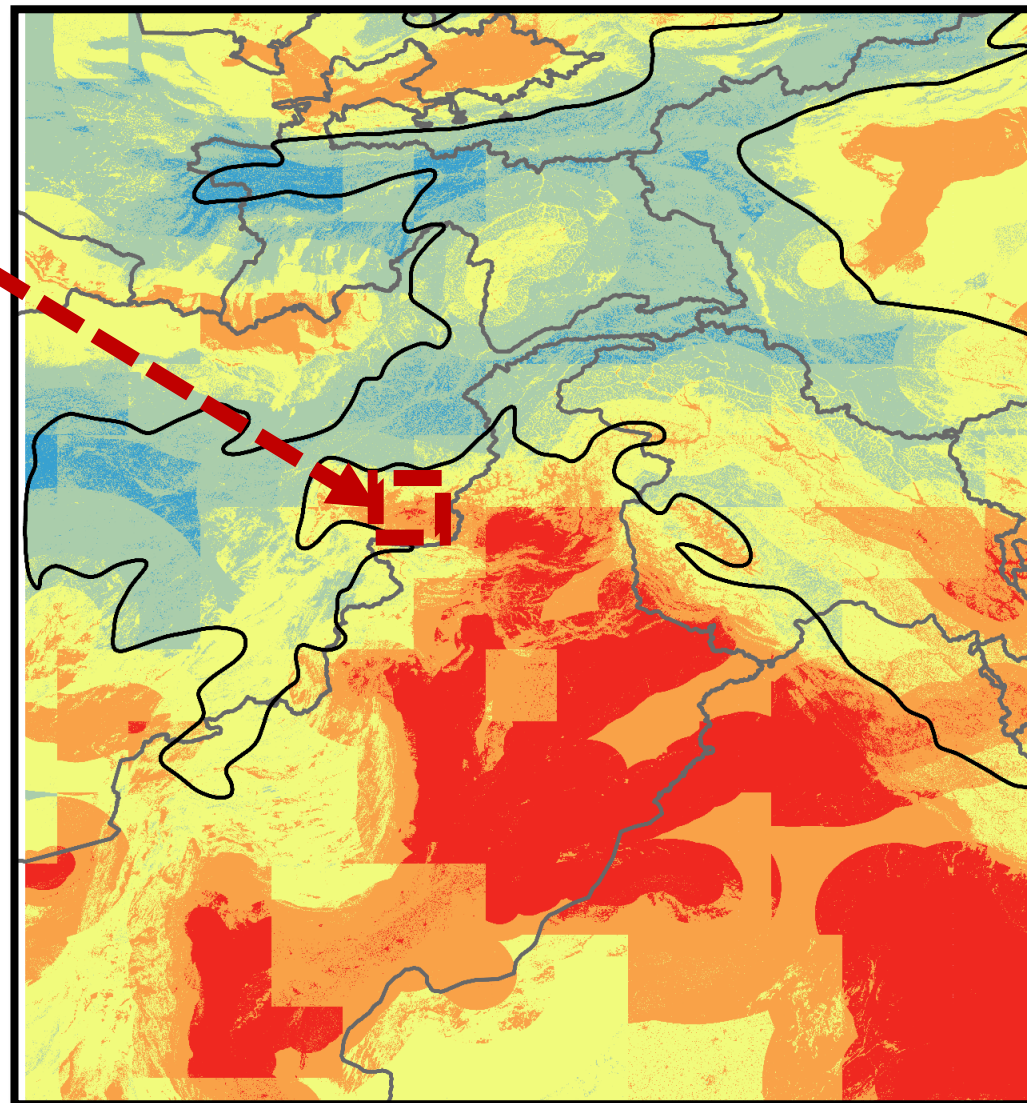


## RELATED NEWS

Floods Ravage Badakhshan:  
Homes and Hundreds of Acres  
Destroyed >

Nangarhar Hit Hard by Storms:  
Increase in Casualties  
Reported >

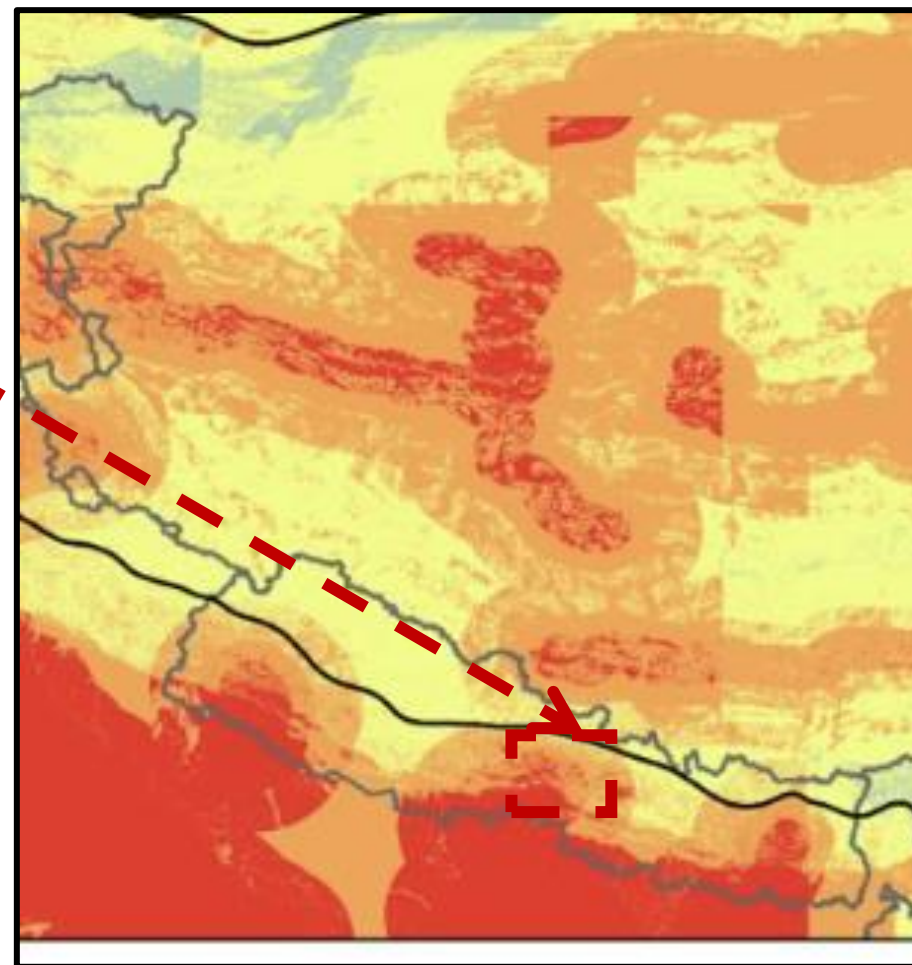
Recent rainfall and flooding in Afghanistan's Maidan Wardak and Logar provinces have claimed the lives of four people, including three children, and injured four others.



## Nepal flash floods: Nine dead, many stranded; rescue efforts underway

The flood might be caused by the outburst of a glacial lake situated near the Nepal-China border, said an official

Updated - July 10, 2025 12:36 pm IST - Kathmandu



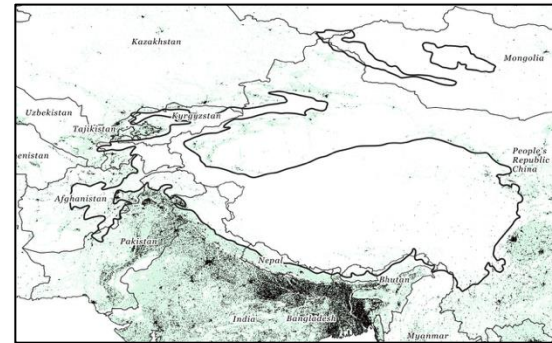
**Validation**

- Building a repository of recent flood events (Documenting affected sectors, infrastructure, and population exposure)
- Assess flood intensity and event characteristics
- Identify flood origin: (above-normal rainfall, glacial/flash flood events or other triggers)
- Cross-check flood risk against observed data and reports

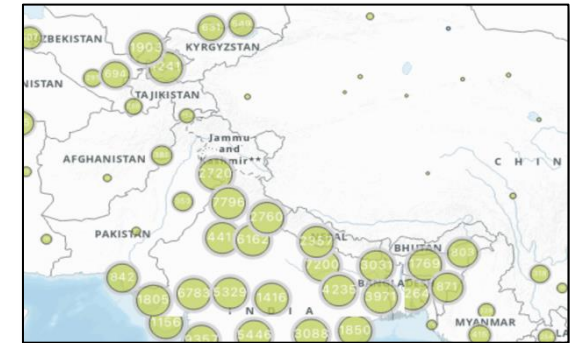
**Next steps for IBF**

- Adjustable weights in the current model (Could be applied based on country experience)
- Considering other potential variables for the model, such as snow-related elements, depending on the suggestions by TPCF experts
- Integrating future population projections and other socio-demographic exposure assessments as applicable

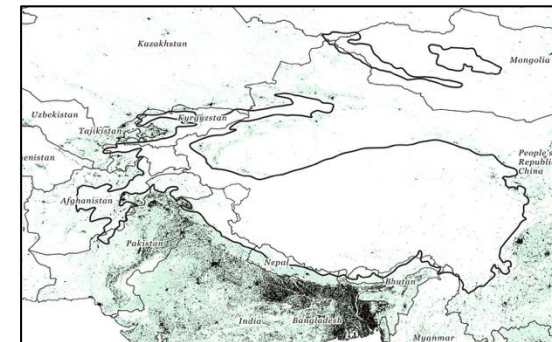
**How can we further adapt and refine this model to be more suitable for the Third Pole?**



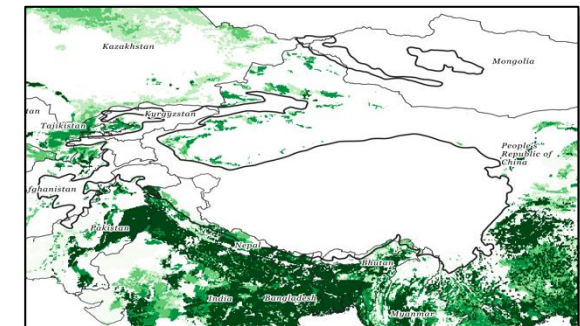
Dynamic Future Projections of WorldPop Population Count Global Mosaic 1 km res



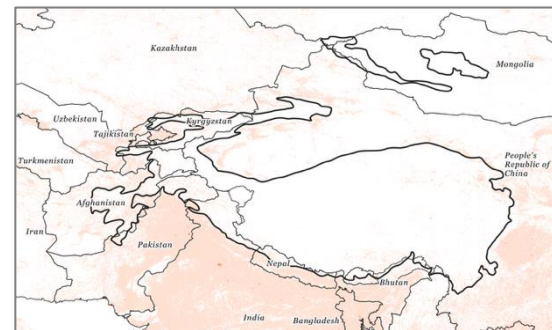
Education /Health Infrastructure



WorldPop Age/Gender Demographic Global Mosaic 1 km res



FAO MAPSPAM Crop Yield for various crops at 10 km res



FAO Livestock density



Tell us what you would like to see



**THANK YOU**

